



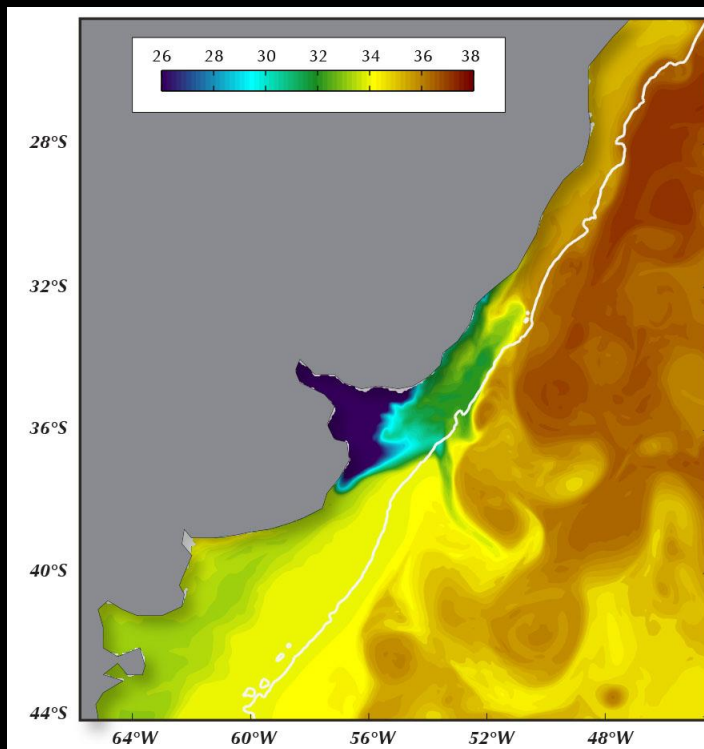
# The Salinity Signal of the Shelf/Deep-Ocean Exchanges in the Southwestern Atlantic Region: Numerical Simulations



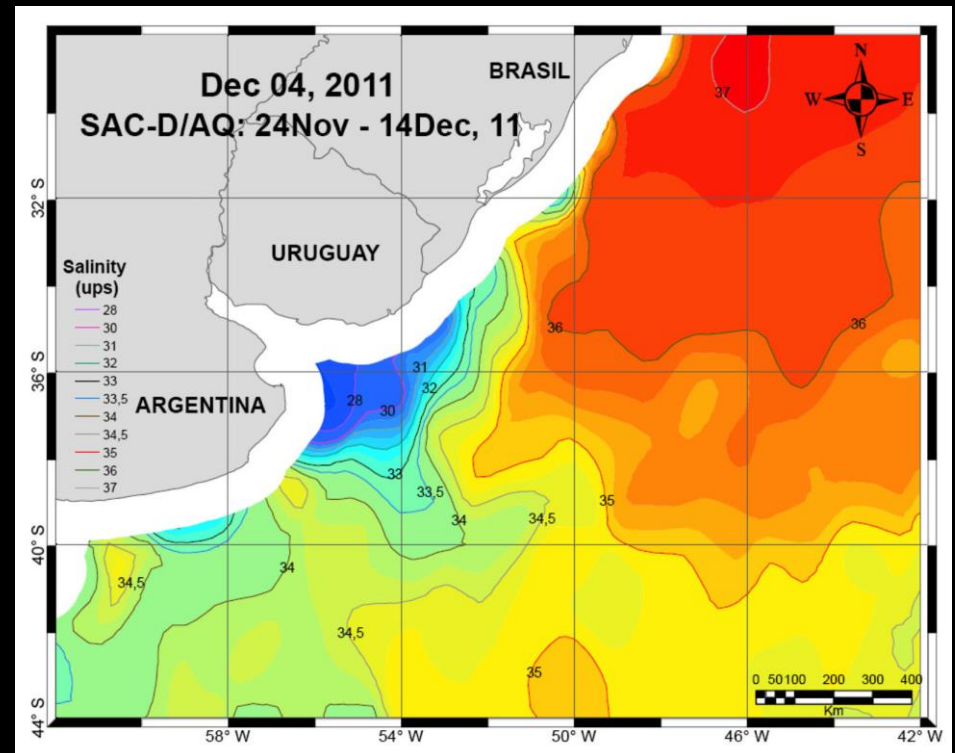
R. Matano , V. Combes, E. Palma, R. Guerrero , H. Fenco, T. Strub

A. R. Piola R., Y. Chao, M. Saraceno

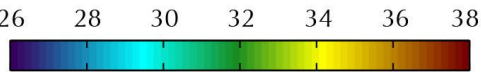
## Model



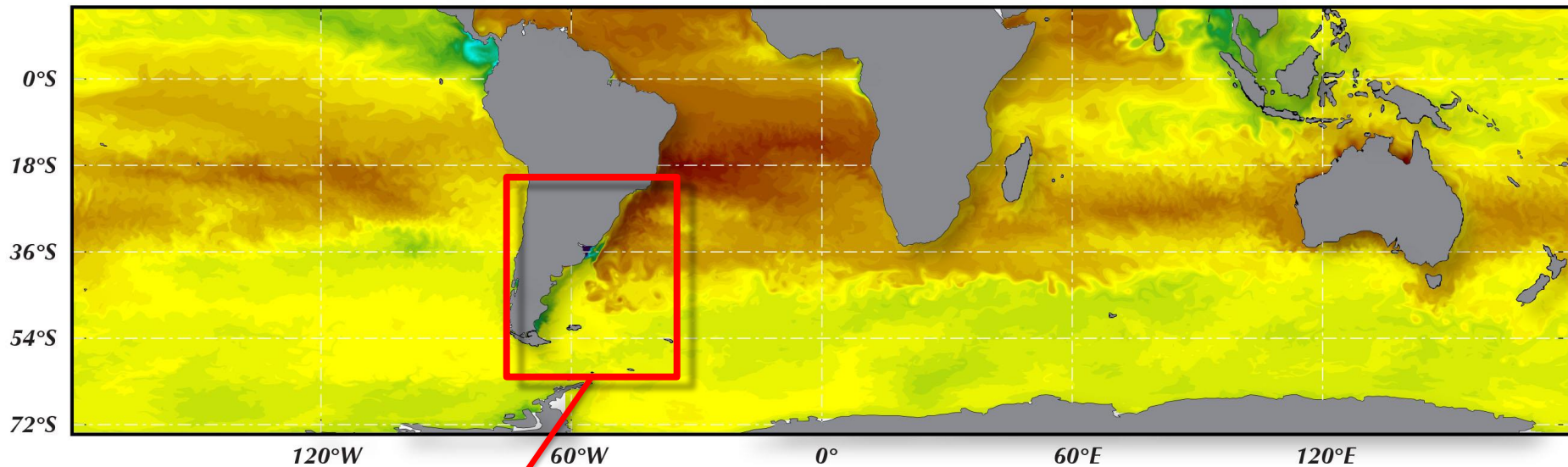
## Aquarius



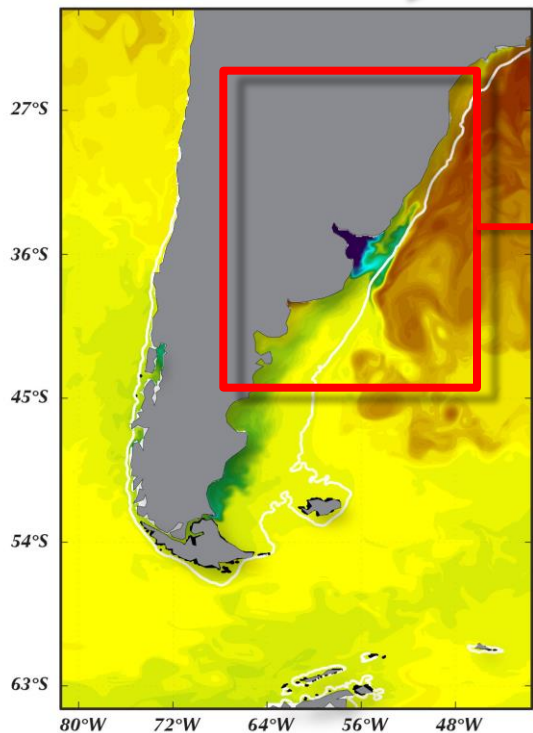
# The Nested Model



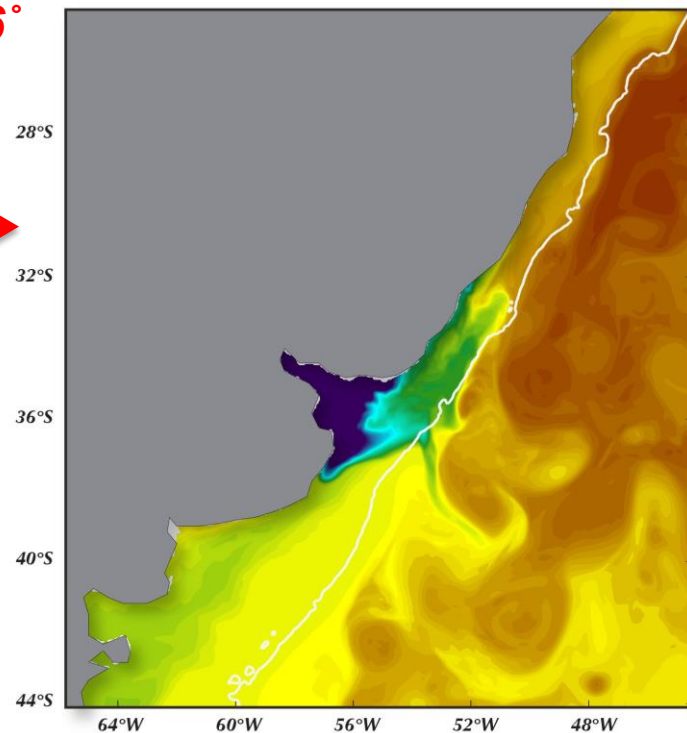
$1/4^\circ$



$1/12^\circ$

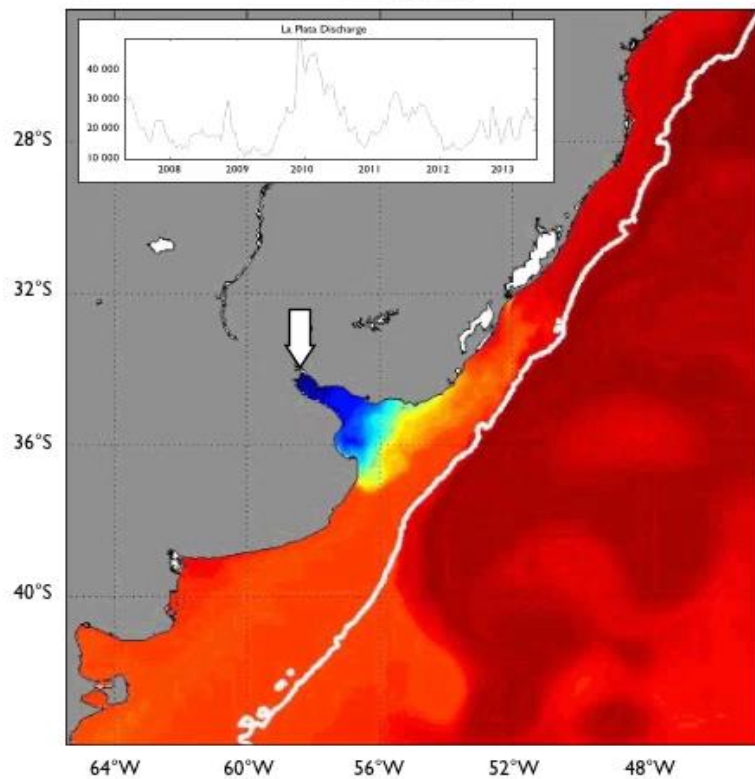


$1/36^\circ$



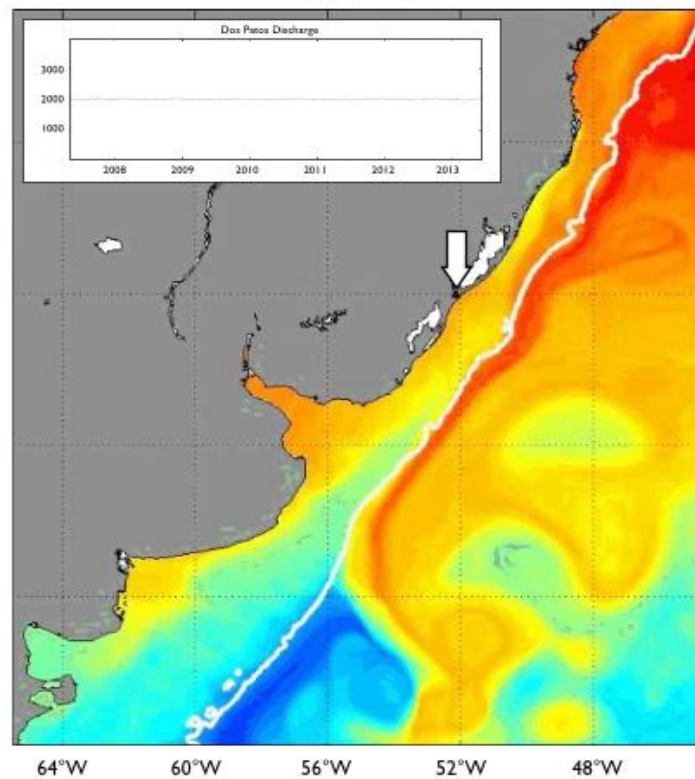
**SSS**

21-Apr-2007



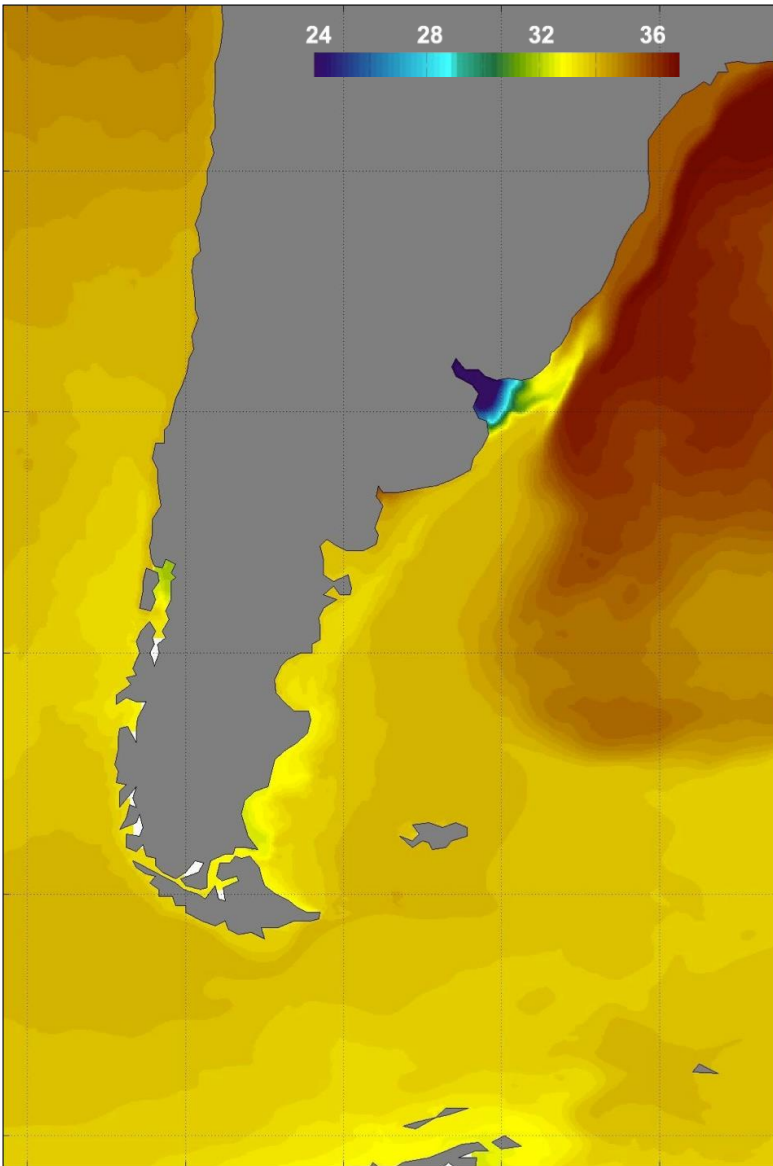
**SST**

21-Apr-2007

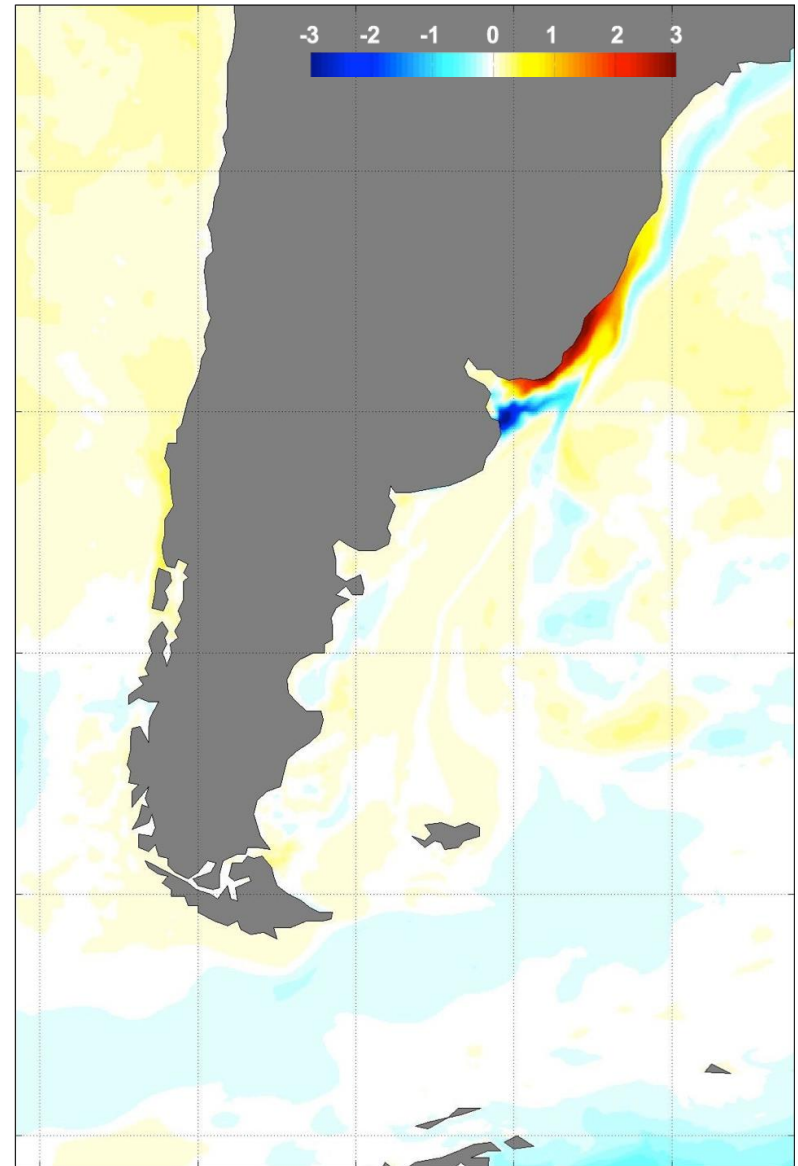


# The Seasonal Cycle: January—March

SSS

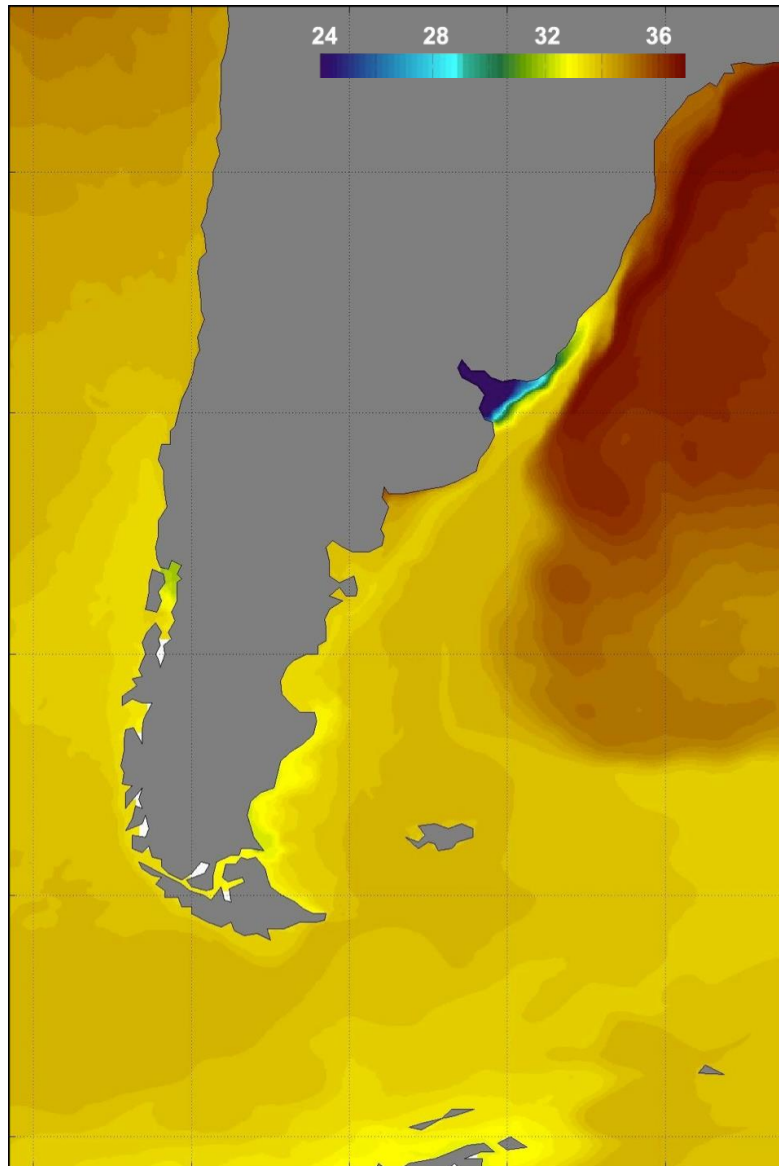


SSS Anomaly

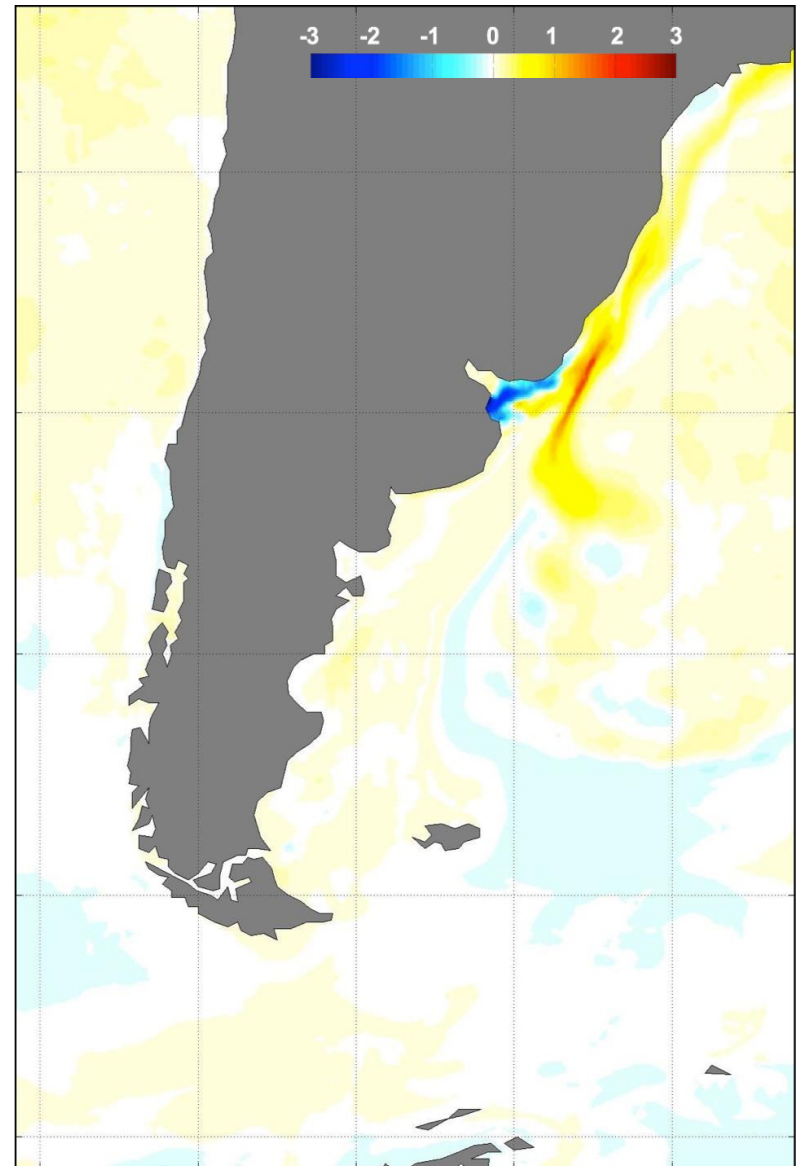


# The Seasonal Cycle: April—June

SSS

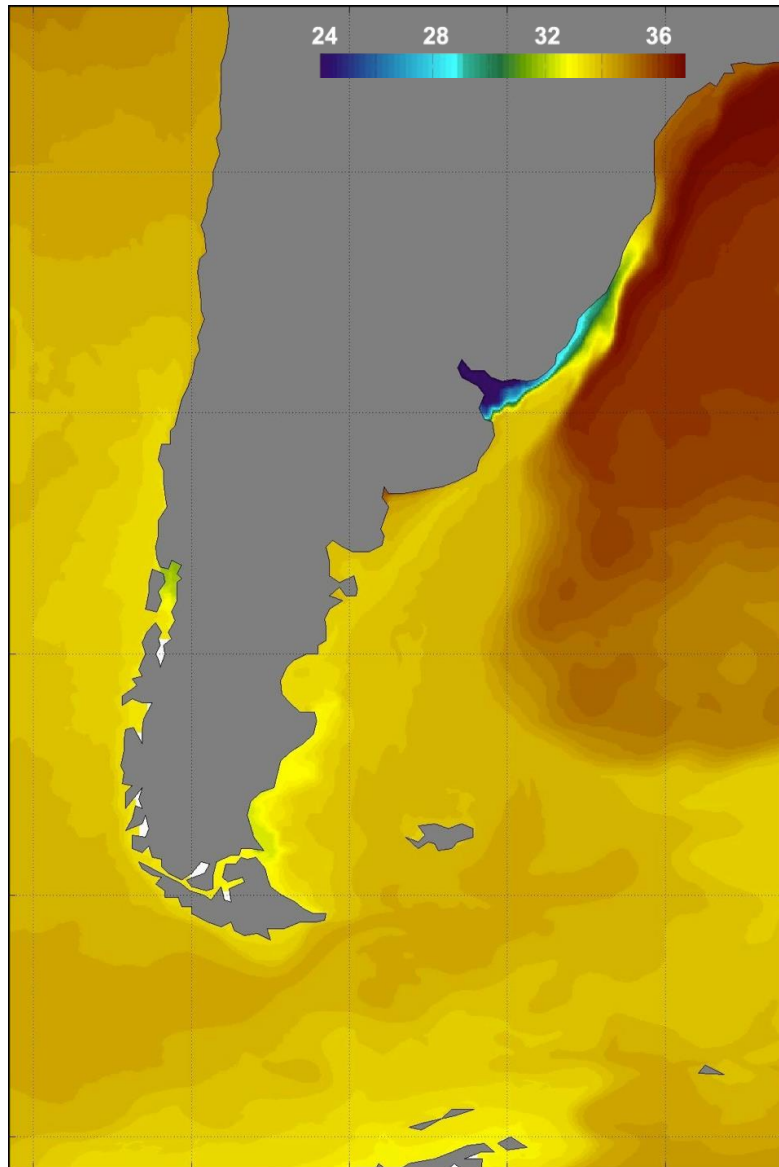


SSS Anomaly

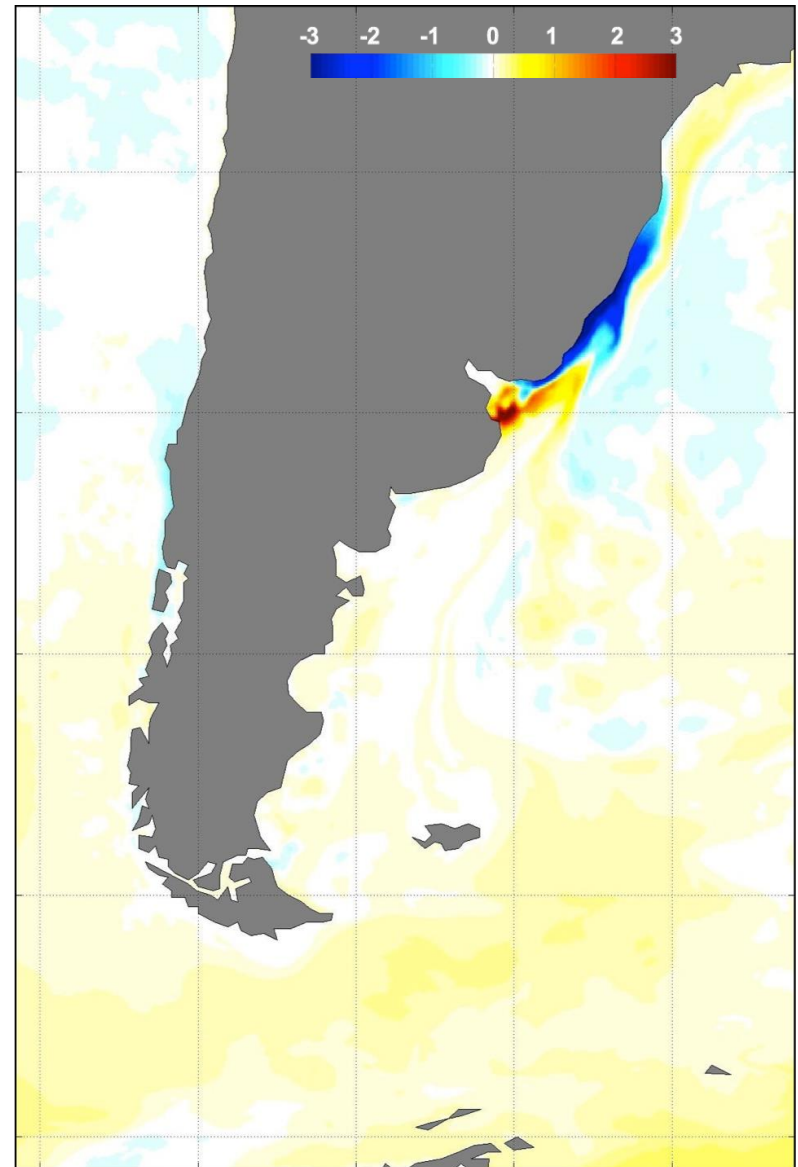


# The Seasonal Cycle: July—September

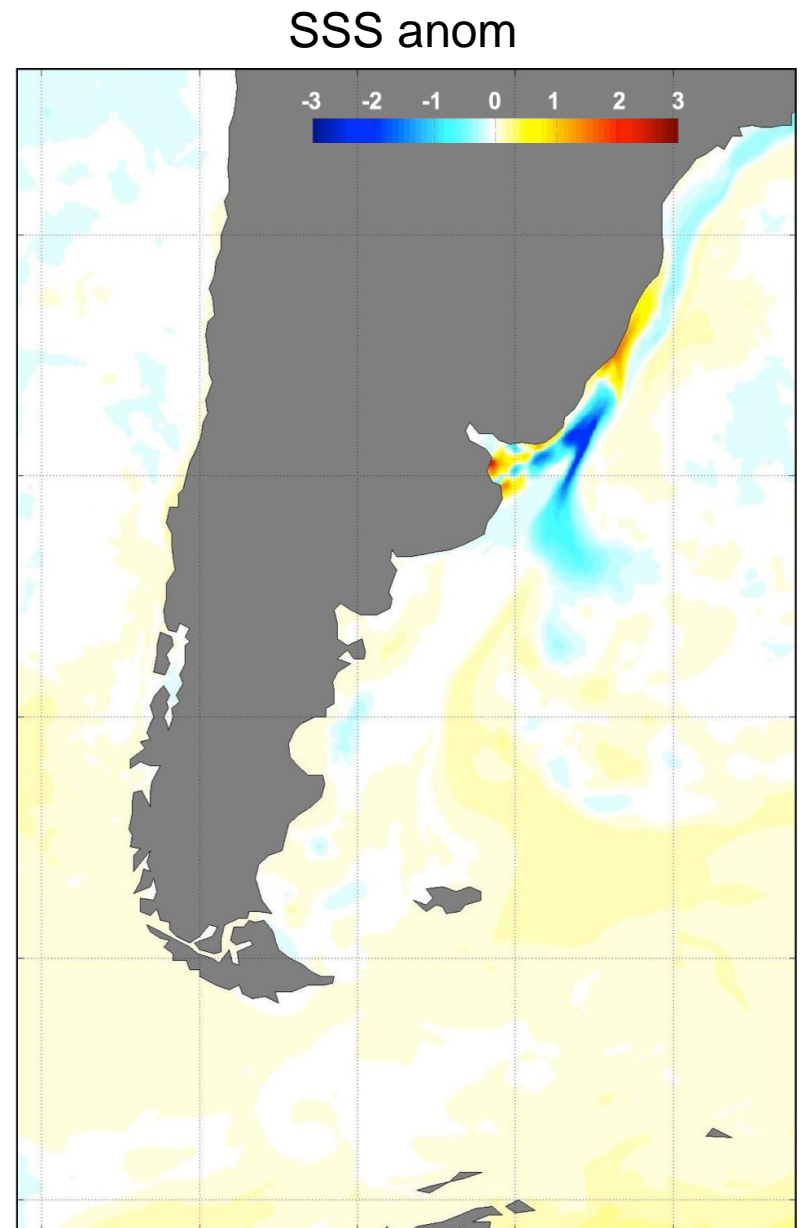
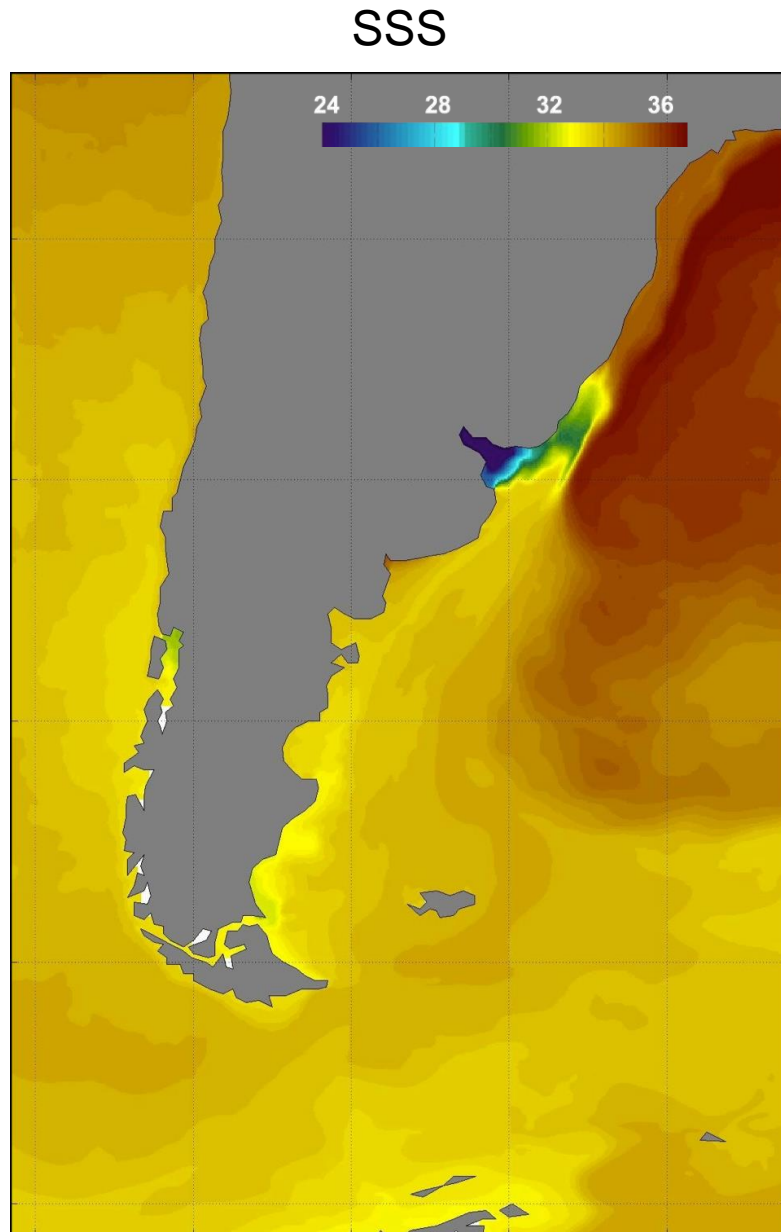
## SSS



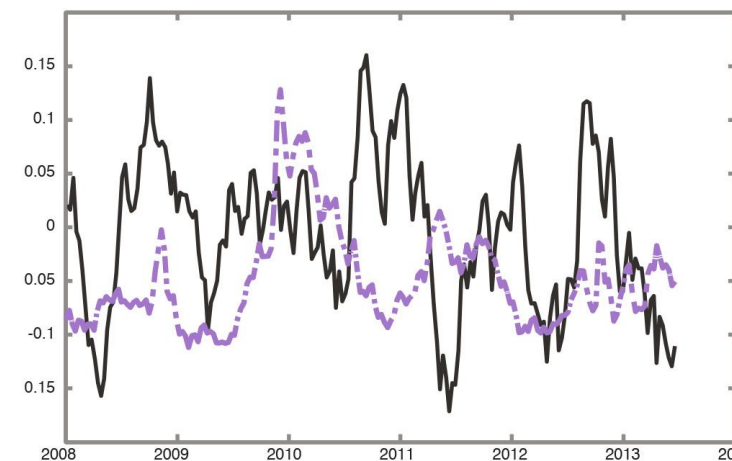
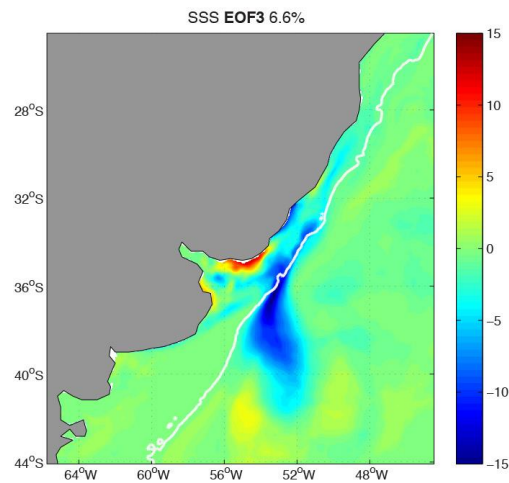
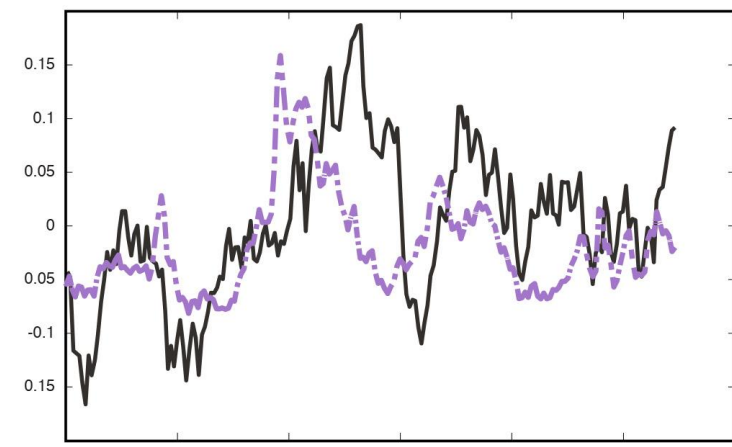
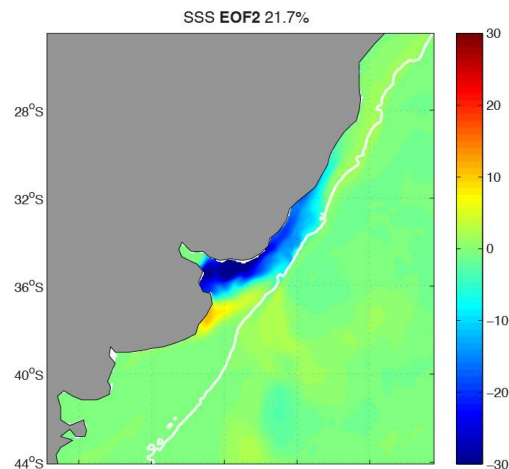
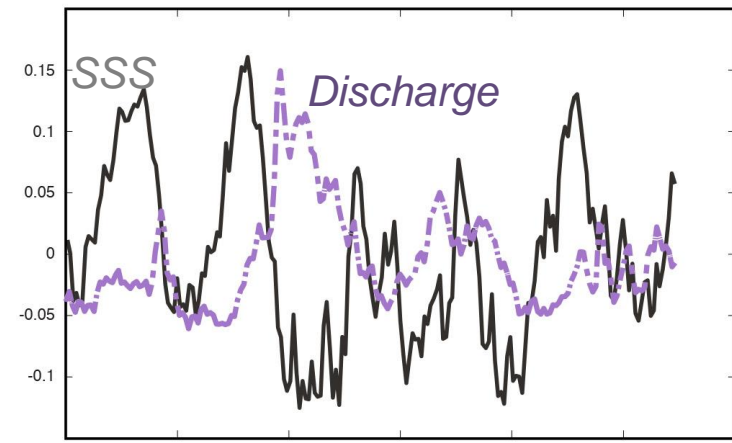
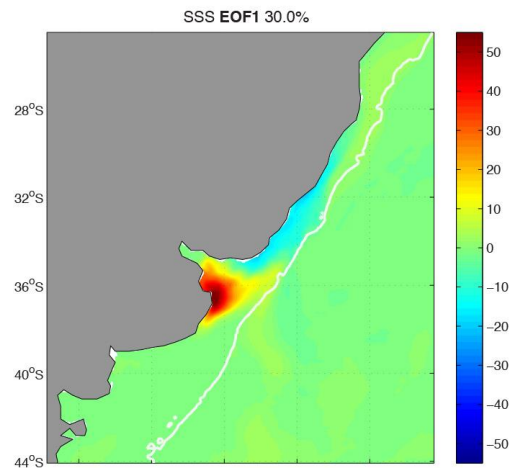
## SSS Anomaly



# The Seasonal Cycle: October—December



# SSS — EOFs

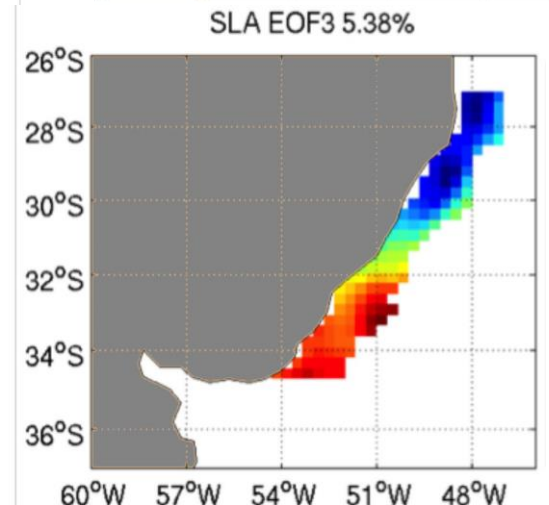
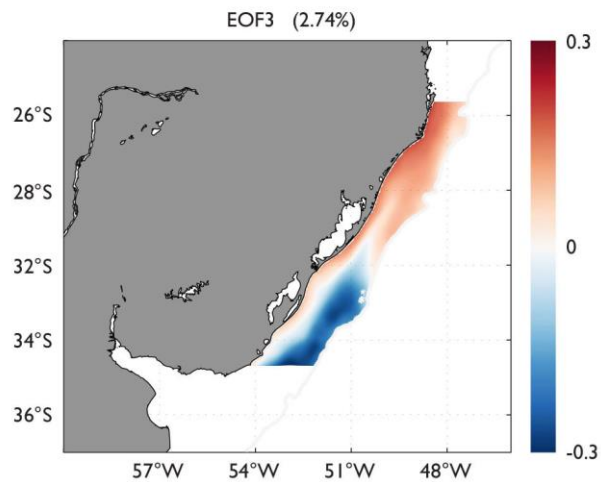
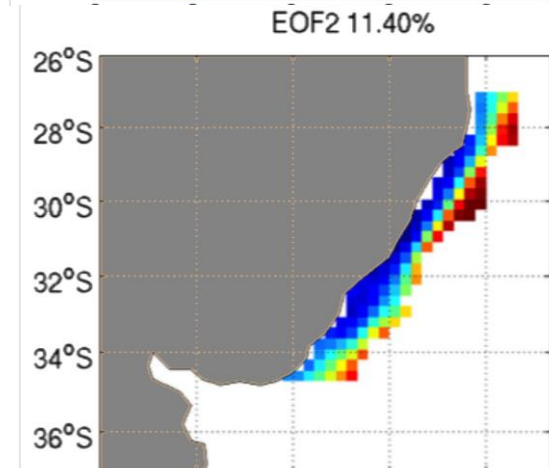
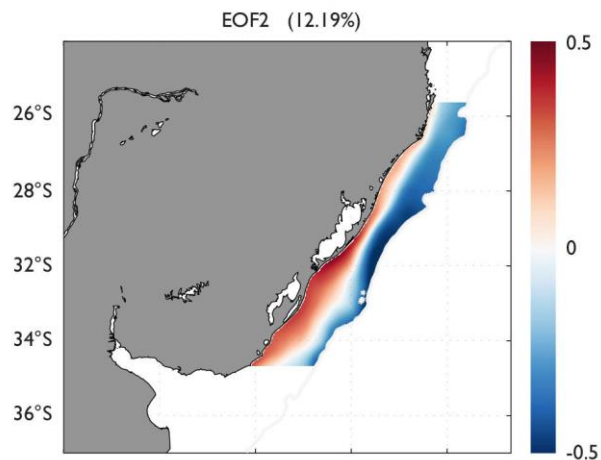
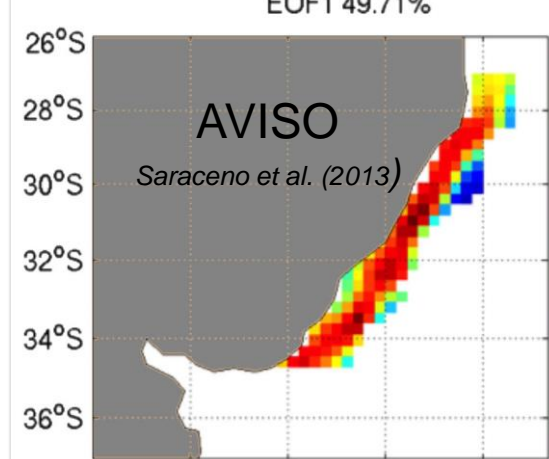
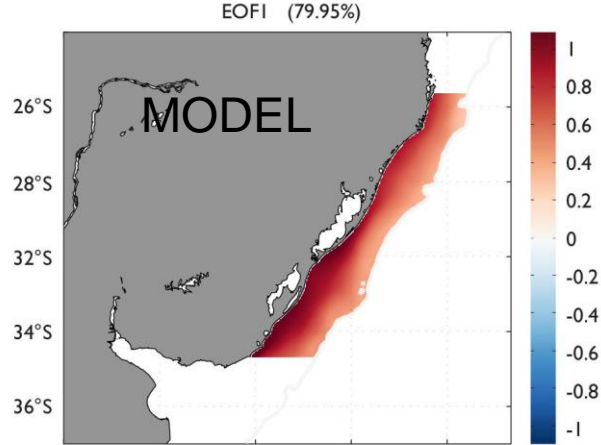




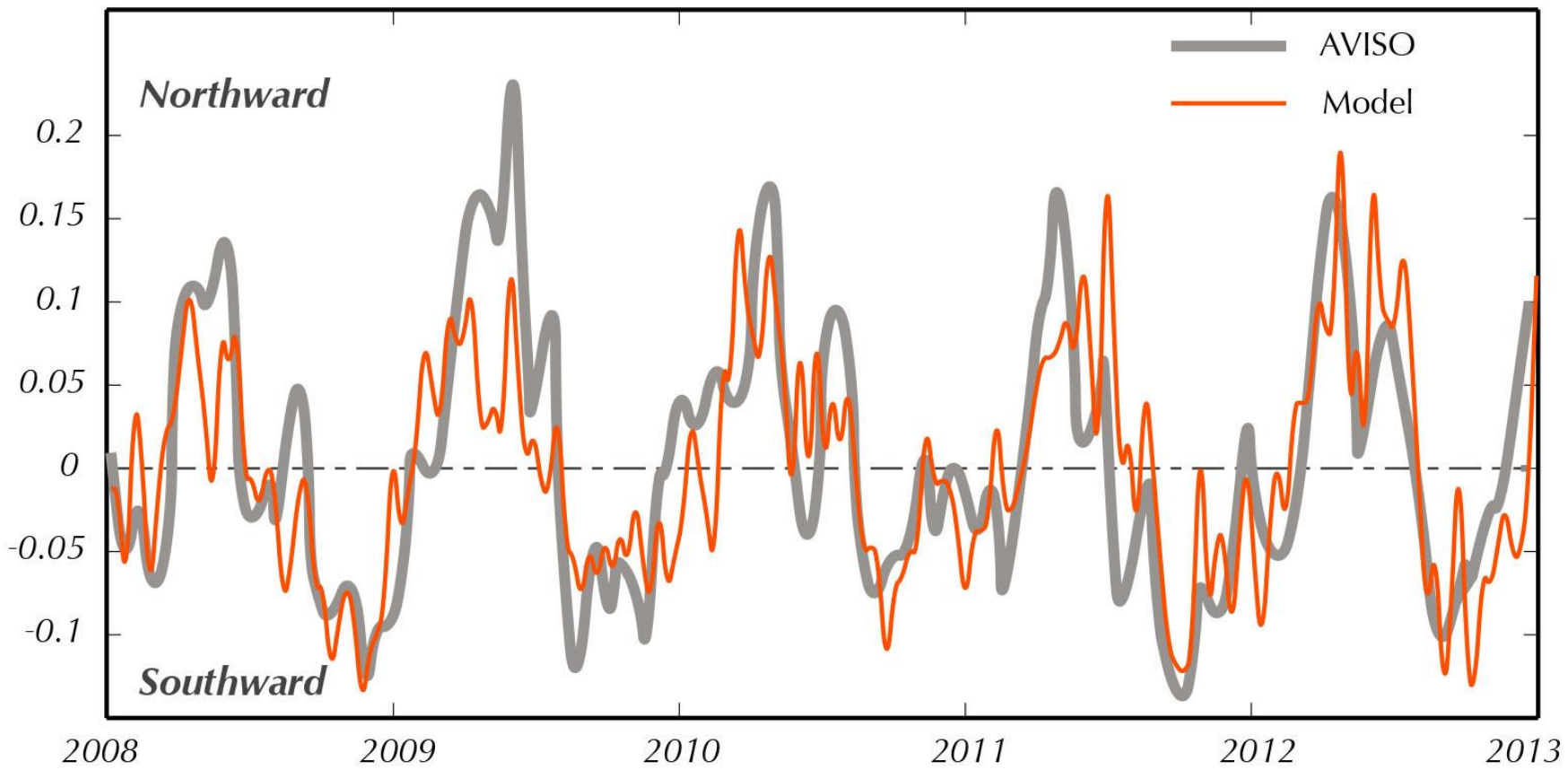
---

# MODEL/AVISO

---

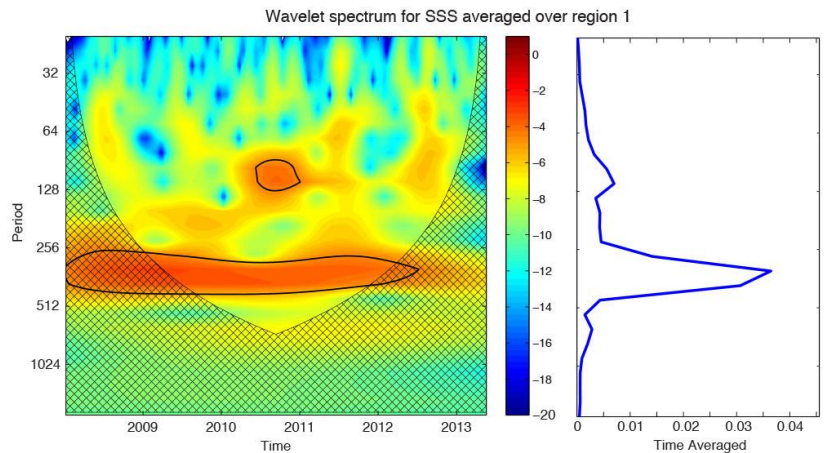
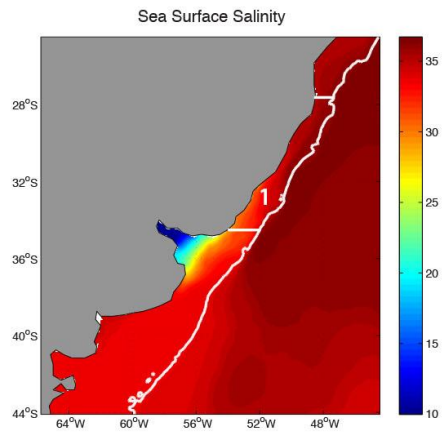


# First EOFs of SSHs

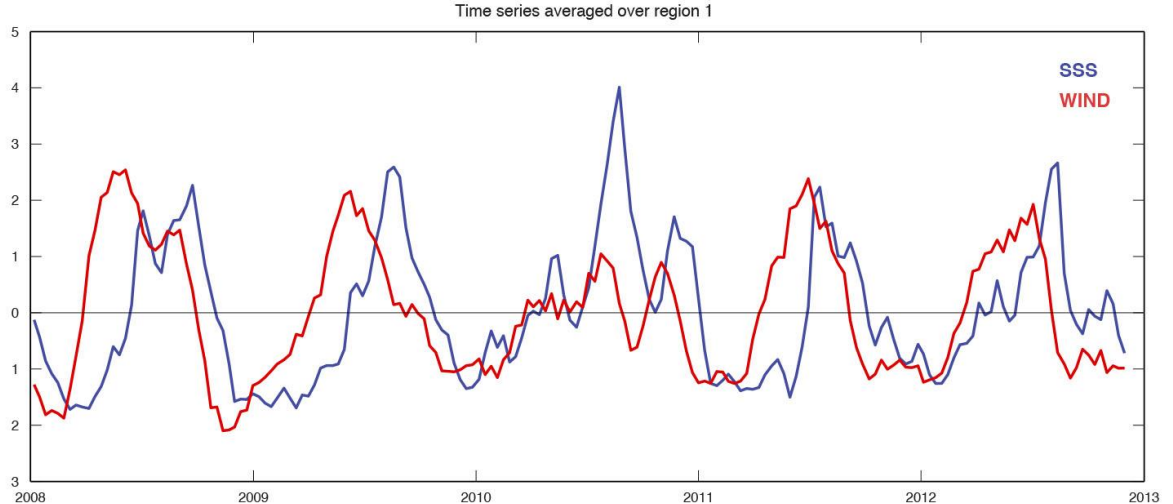
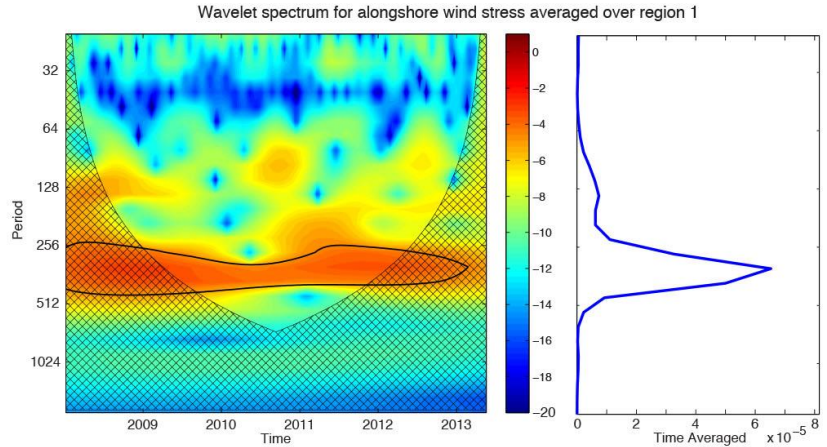
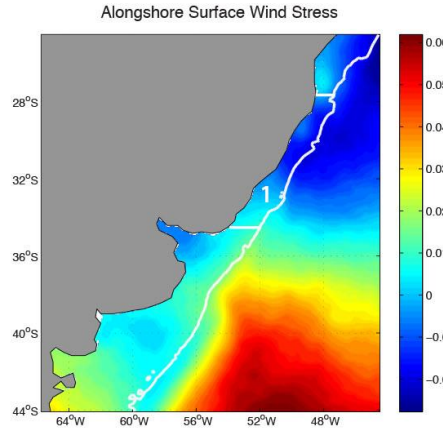


***What Drives the SSS signal?***

SSS

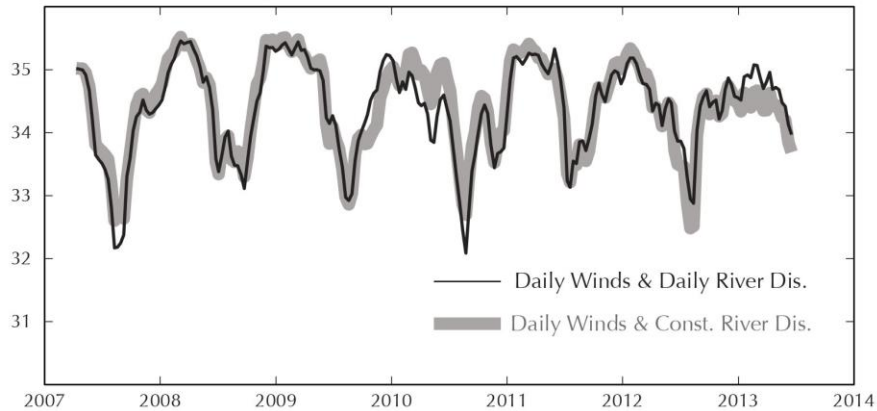


Alongshelf Wind Stress

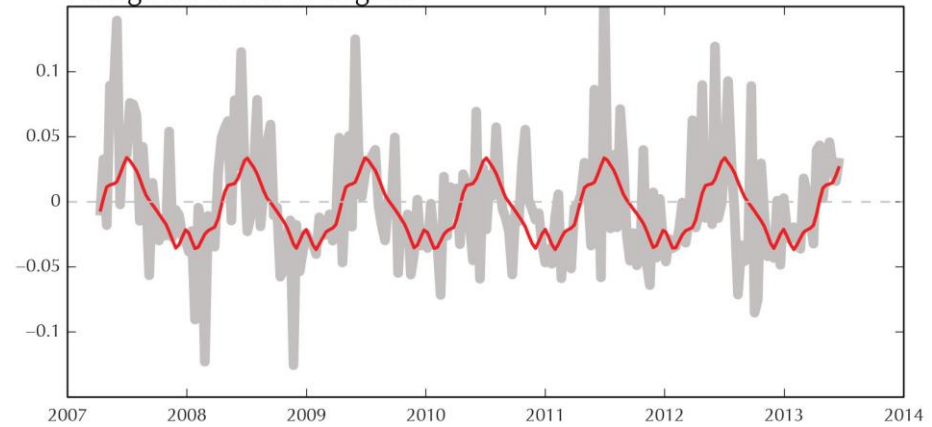


# What drives the SSS in Region 1: Wind or River Discharge?

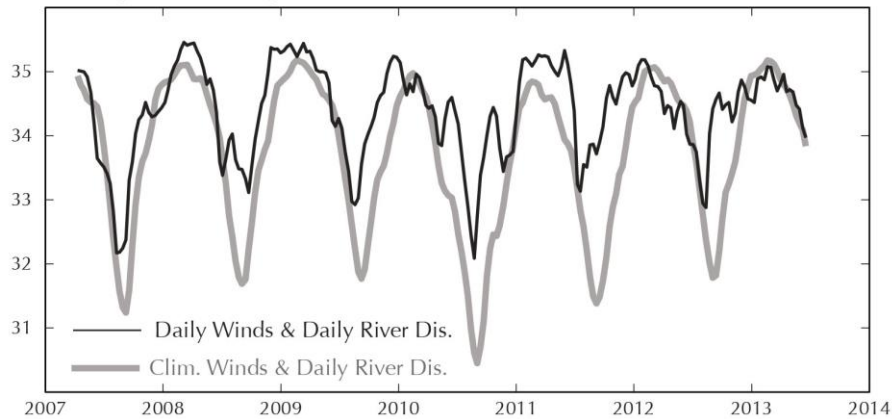
Average SSS in Region 1



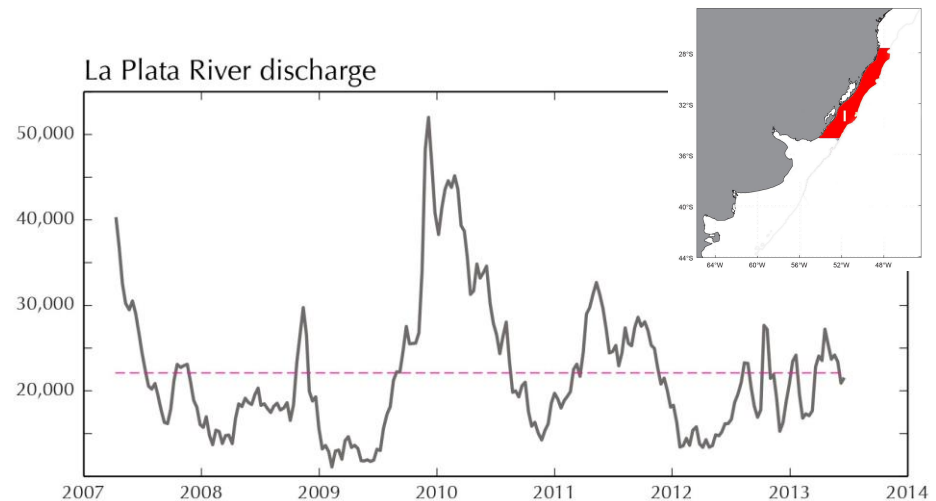
Alongshelf winds in Region 1



Average SSS in Region 1

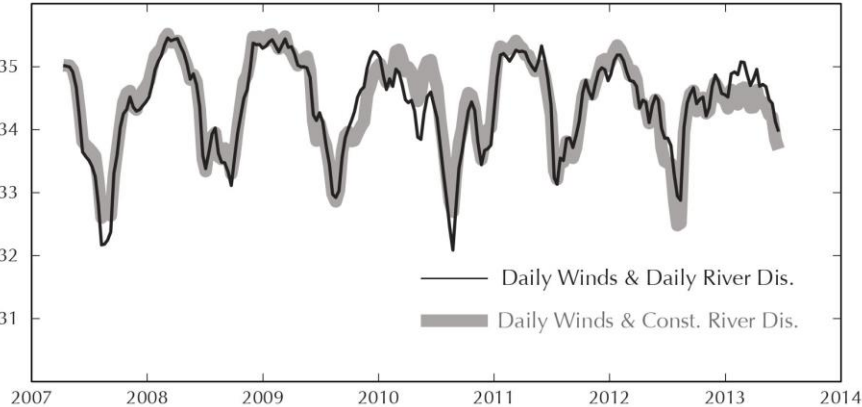


La Plata River discharge

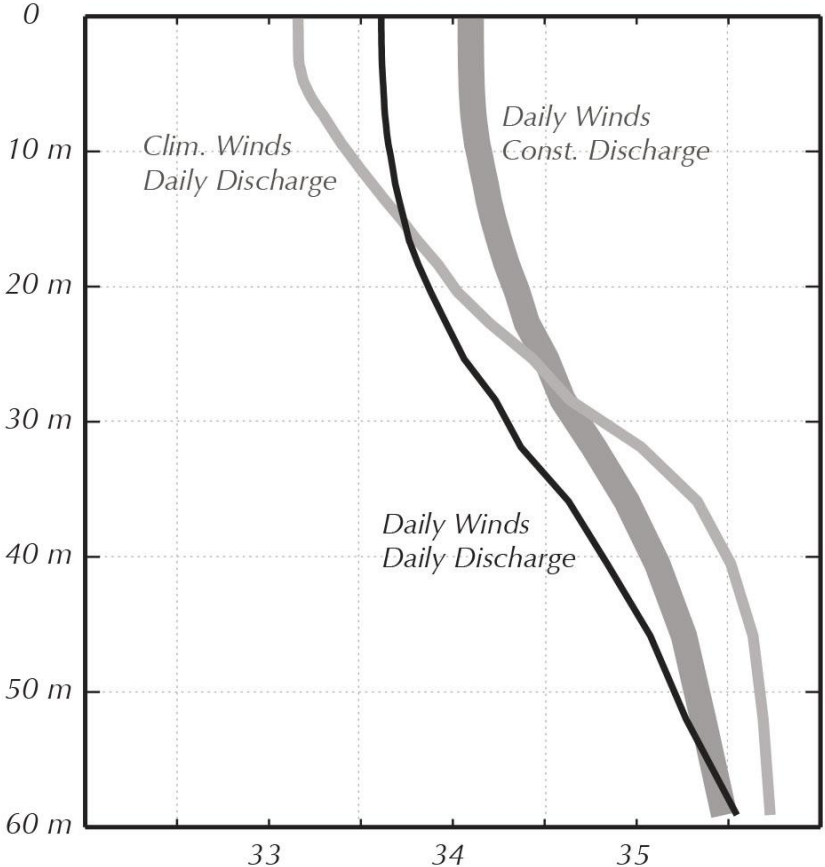
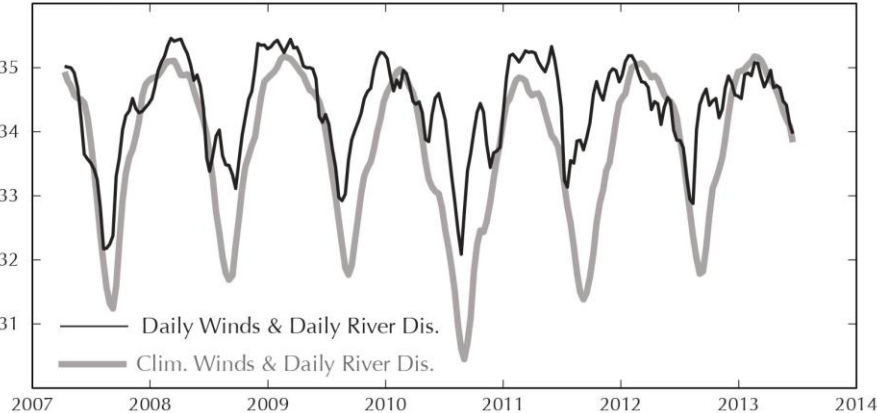


# What drives the SSS in Region 1: Wind or River Discharge?

Average SSS in Region 1



Average SSS in Region 1

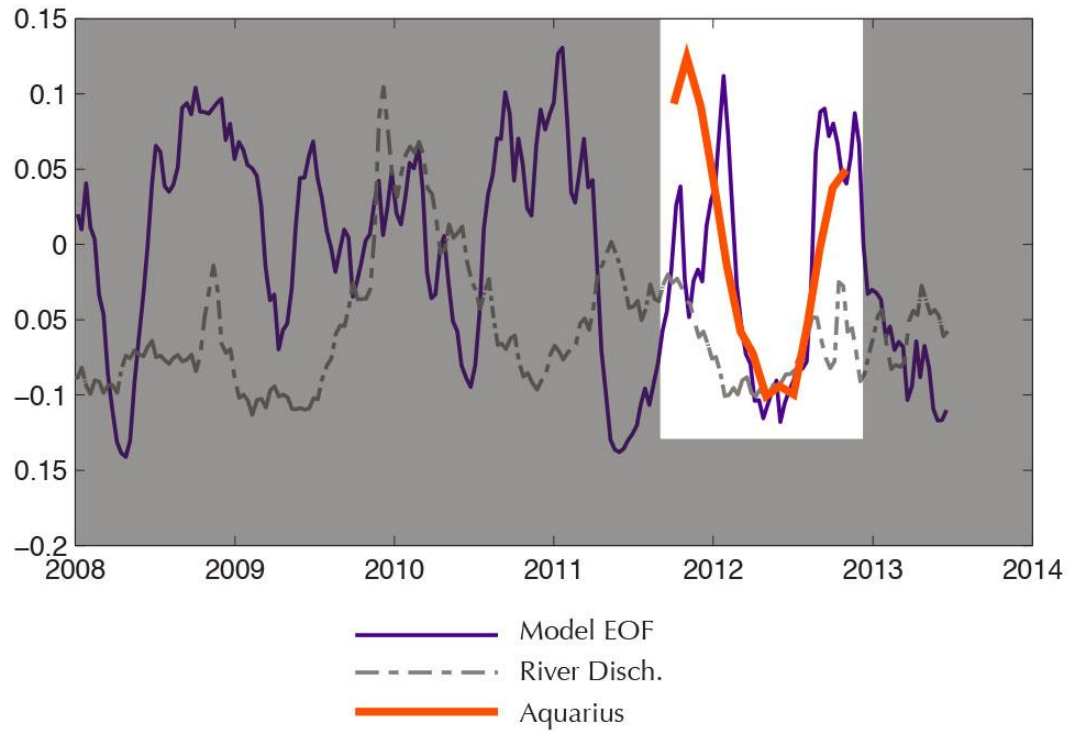
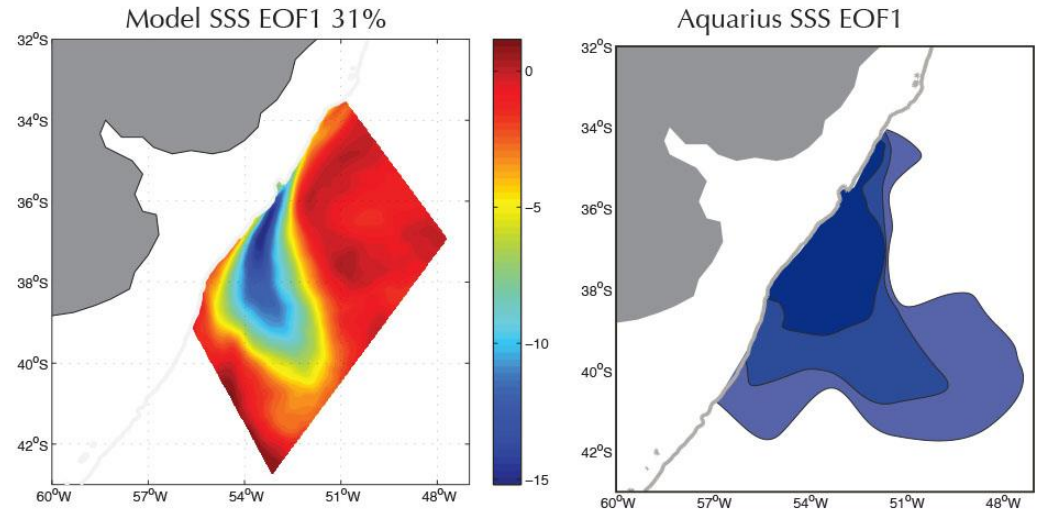


***What happens offshore?***

---

# *Model/Aquarius*

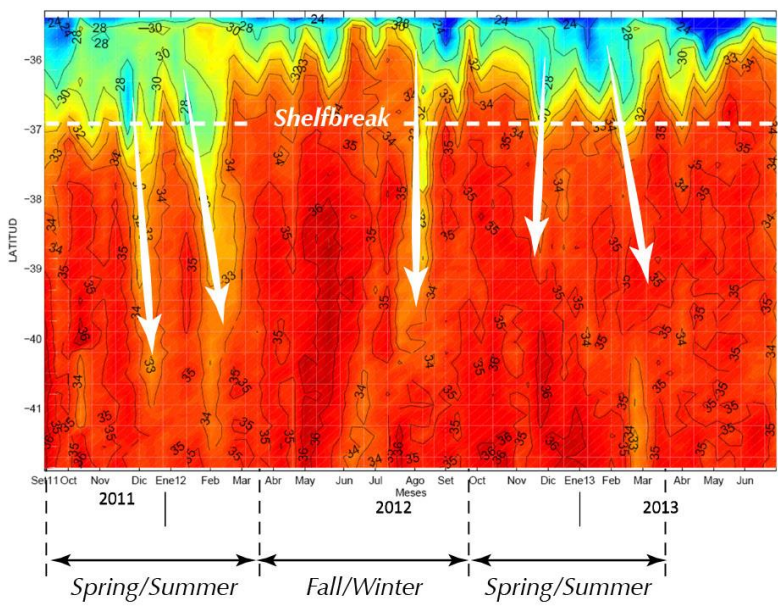
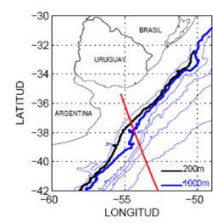
---





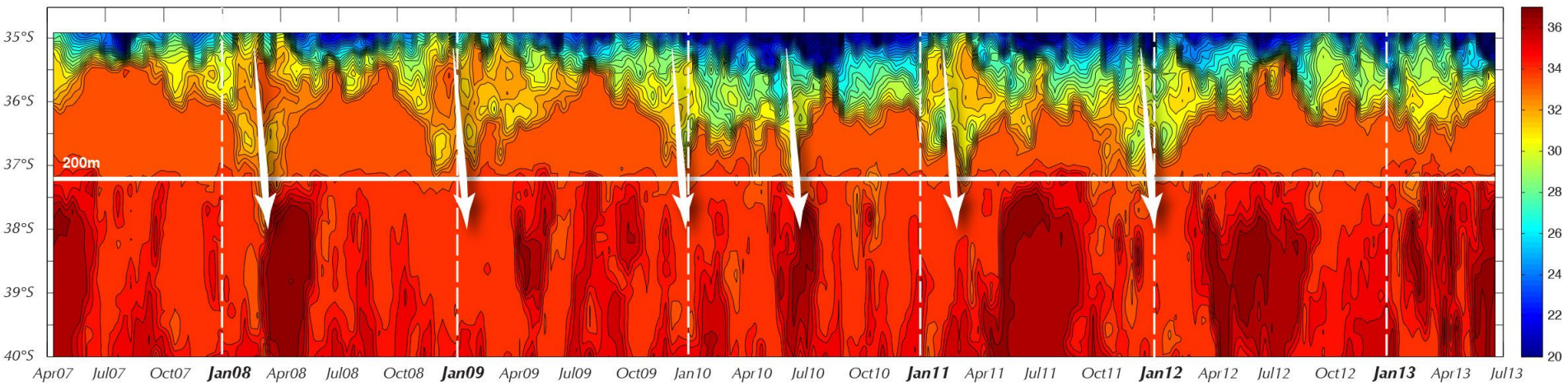
# Aquarius (Guerrero & Fenco)

Hovmoller  
Beam 2 asc

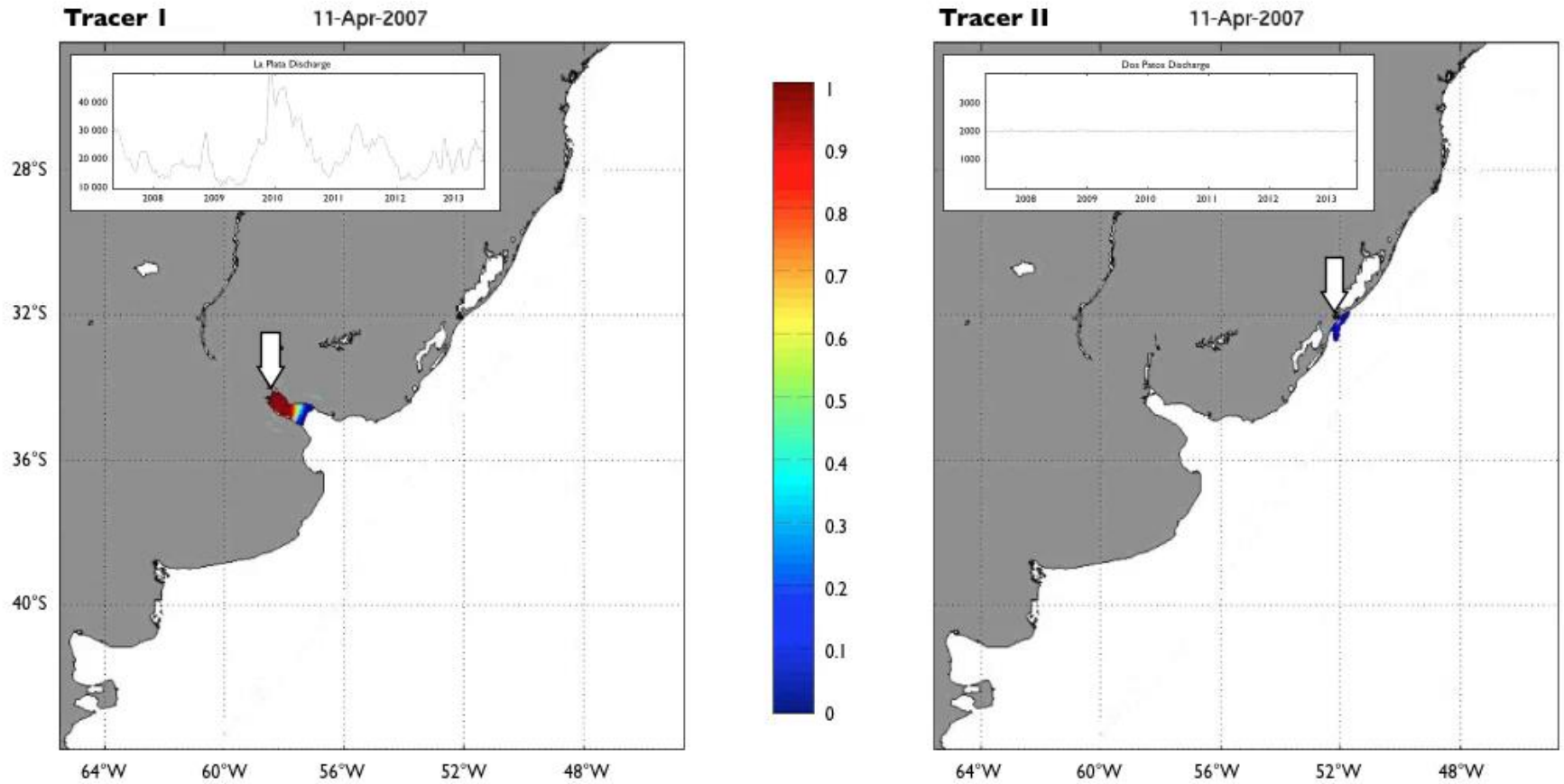


## Sea Surface Salinity

## Model



# Tracer Experiments

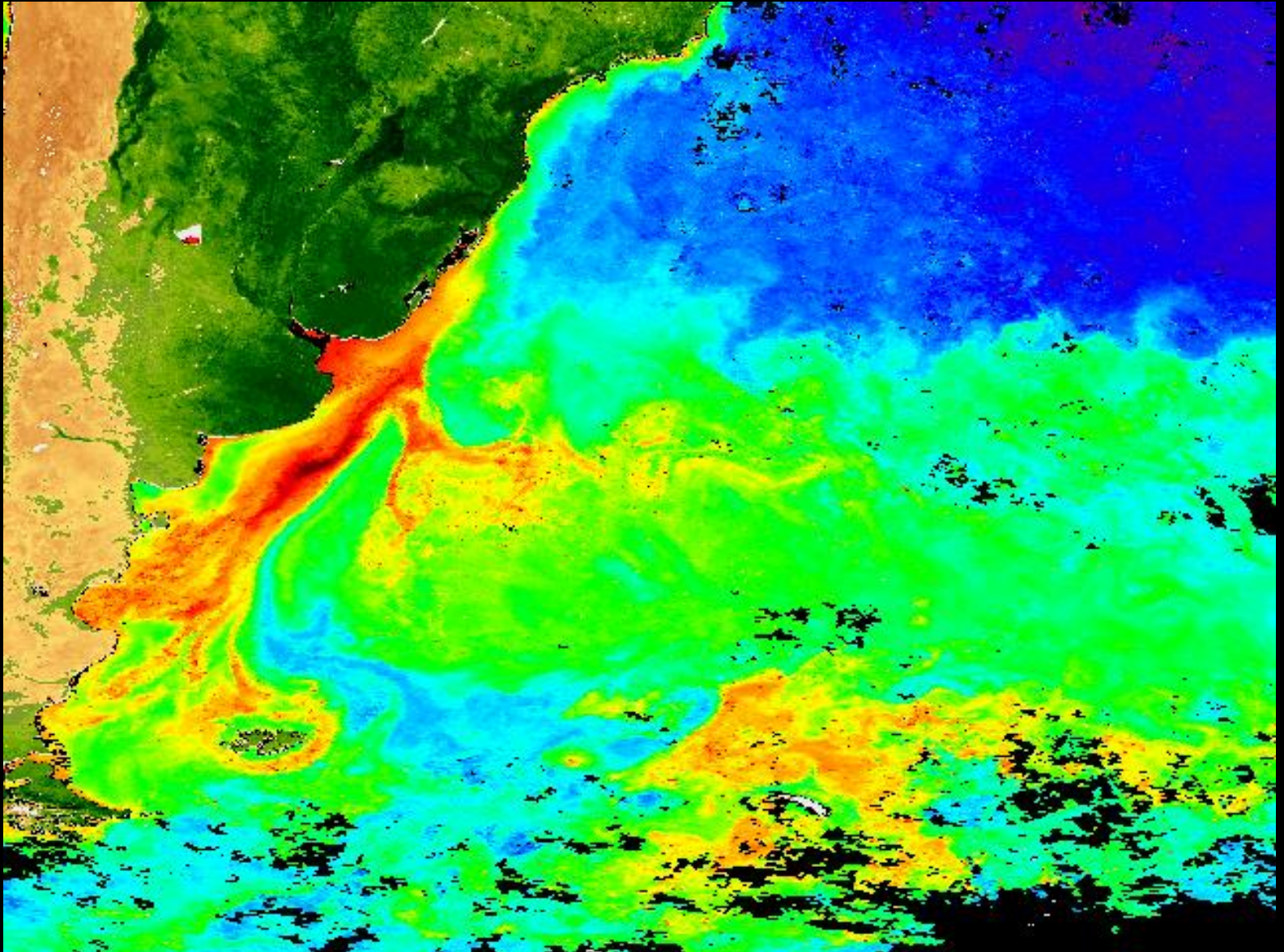


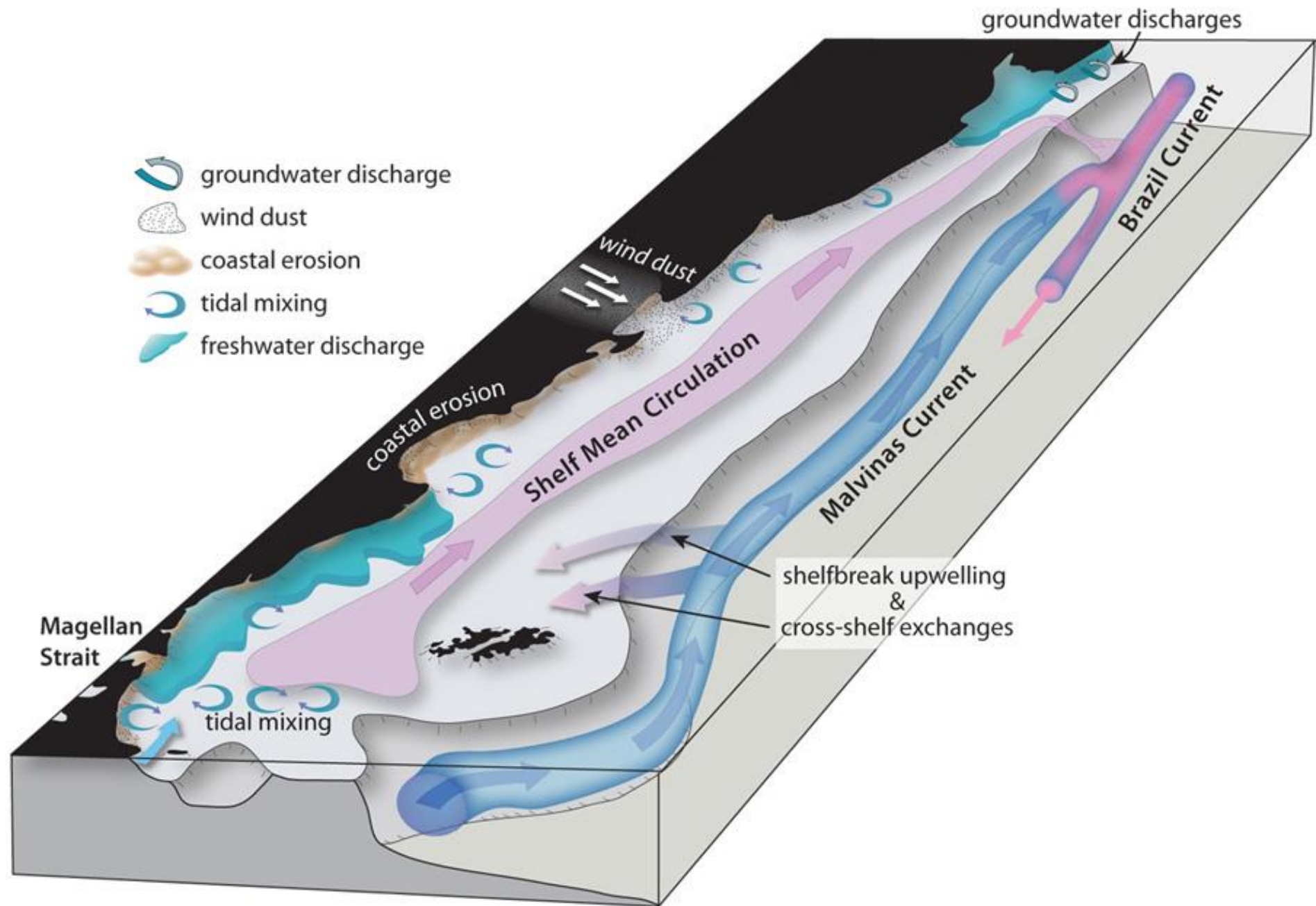
The La Plata River is a cute signal but....

So what?

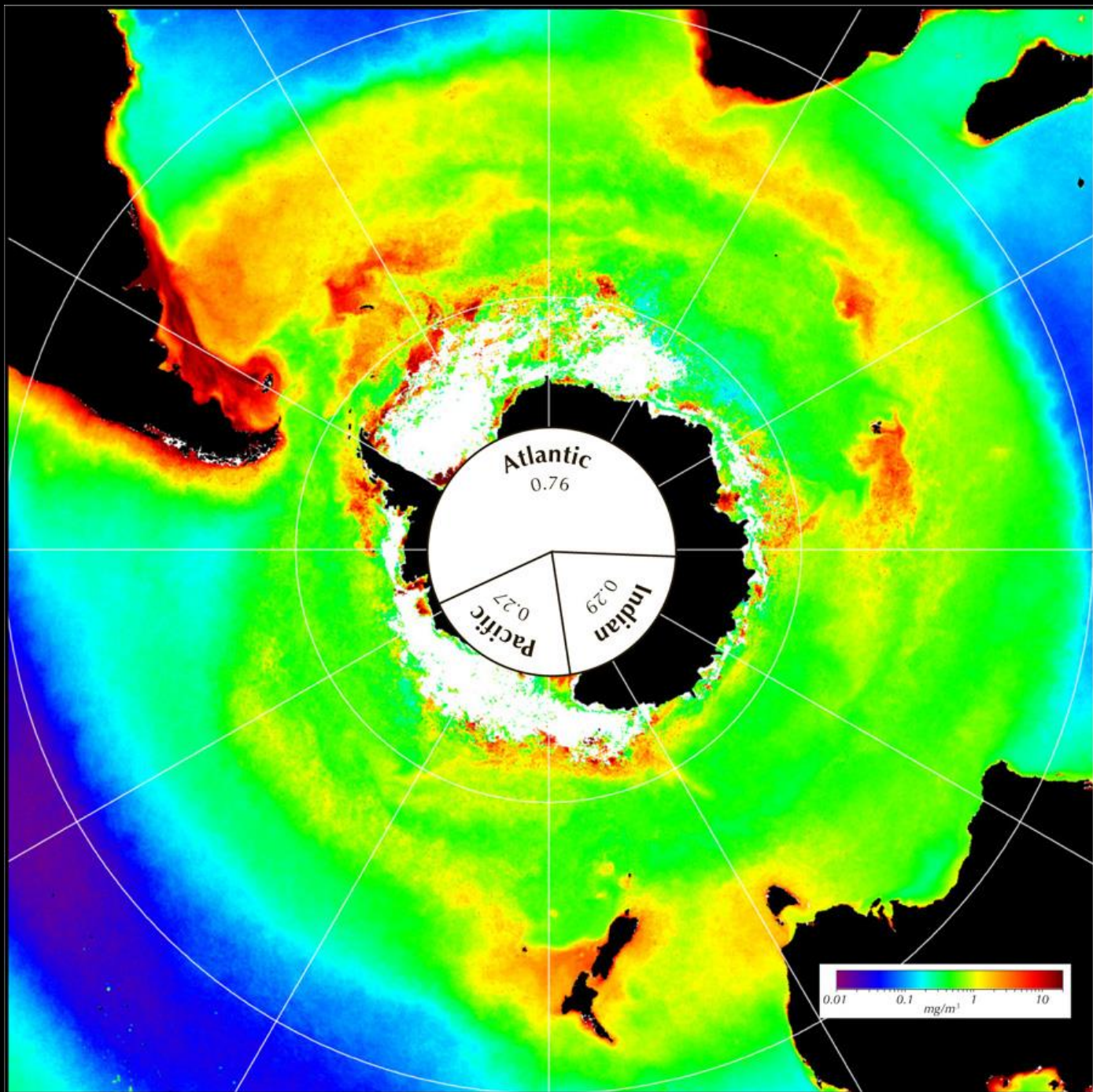
# The Context

---





# The Context



The La Plata River is **NOT ONLY** a cute signal but....

It is also an important signal

