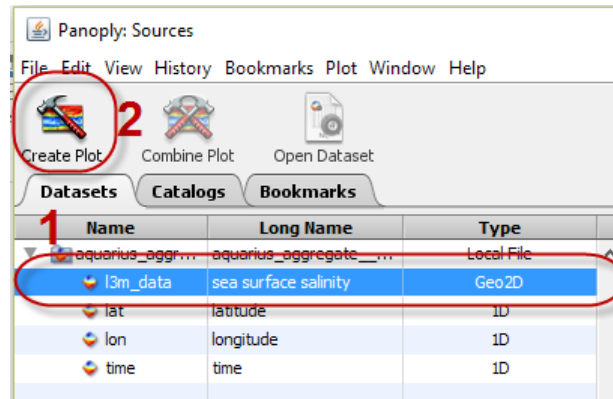
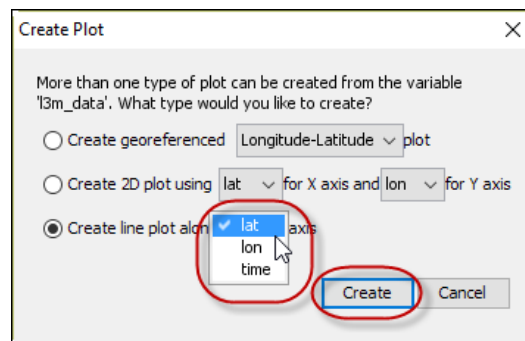


How to Make a Line Plot in Panoply



Click the data set you wish to Plot (1).

Click **Create Plot** (2).

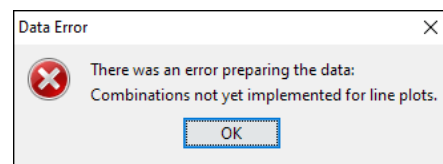


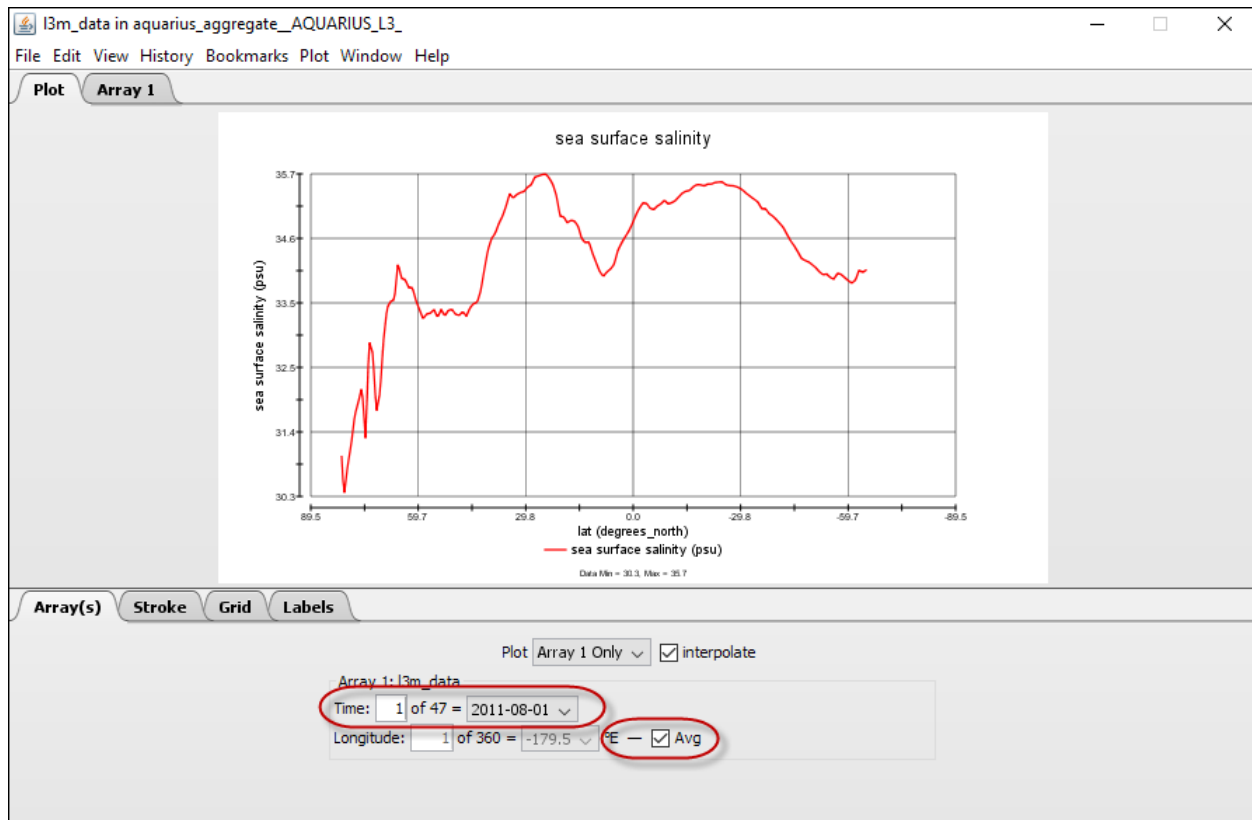
Click in the radio button next to **Create line plot along ... axis**.

Select the axis you wish to use.

Click **Create**.

Note: You cannot combine line plots at this time.





Array(s) Tab

Advance through **Time** steps using arrow keys or entering a number (e.g. Time step 1 of 47). The line graph will update with each step.

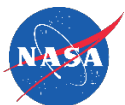
Or

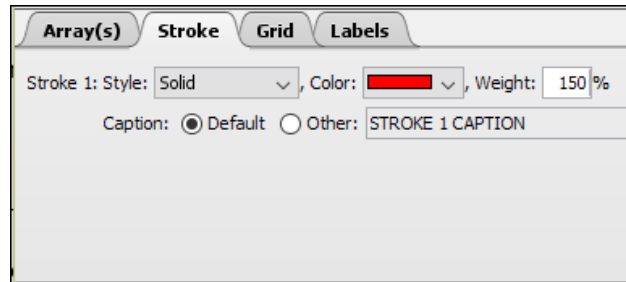
Select a specific time step from the **Time** drop-down menu.

At the Longitude variable, de-select the check-mark in the box next to **Avg** to disable the Average function. The **Avg** feature is only available with Longitude.

When **Avg** is not active, you can navigate through the Longitude steps in the same way you move through the Time steps.

Note: When plotting **Time** or **Longitude**, you may navigate through the **Latitude** steps in the same way you move through **Time** steps.



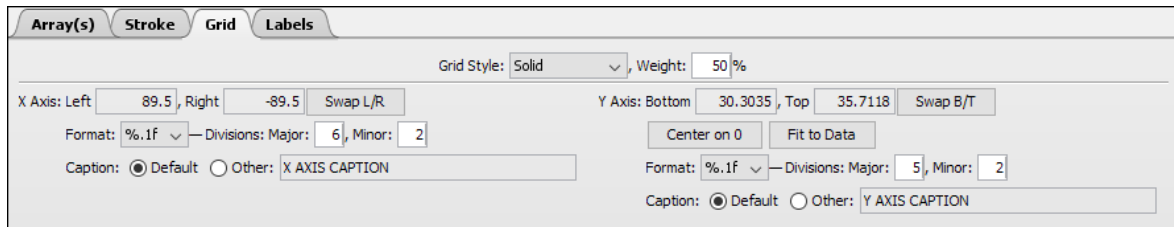


Stroke Tab

Select the Stroke **Style**, **Color** and **Weight**.

The **Caption Default** pulls the data caption from the dataset.

Click in the radio button next to **Other** to enter a different label for the line.



Grid Tab

Select the **Grid Style** and **Weight**

Enter values into the **Left**, **Right**, **Top**, and **Bottom** fields to adjust the minimum and maximum values for each Axis.

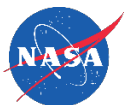
Click **Swap L/R** or **Swap B/T** to flip the Axis.

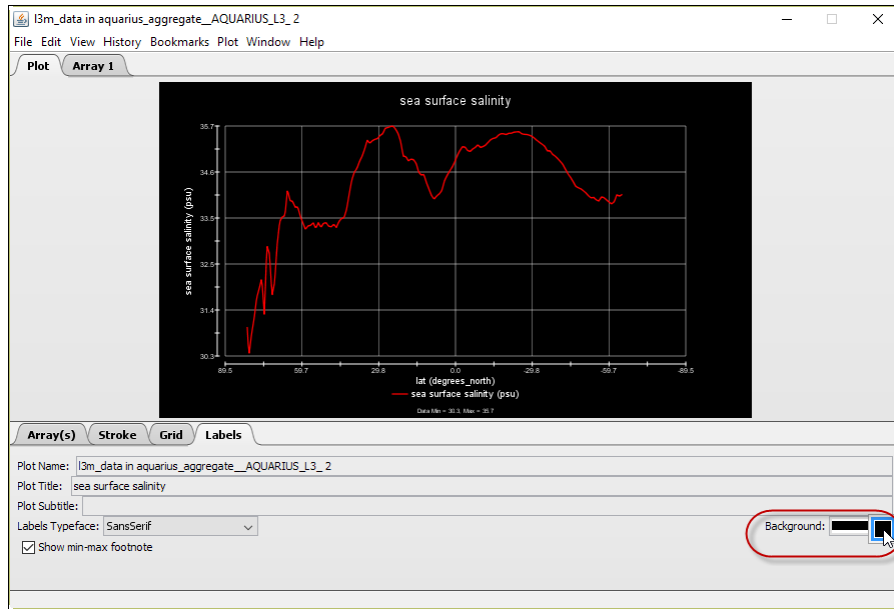
Click **Fit to Data** to automatically set the Y Axis to the dataset's max and min values.

Use **Format** to select the number of decimal places and how the values are rounded for each Axis.

Adjust the number of **Major Divisions** [tic marks] on the Axis and the number of **Minor Divisions** that subset each tic mark.

The **Caption Default** pulls the data caption from the dataset. Click in the radio button next to **Other** to enter a different Axis title.

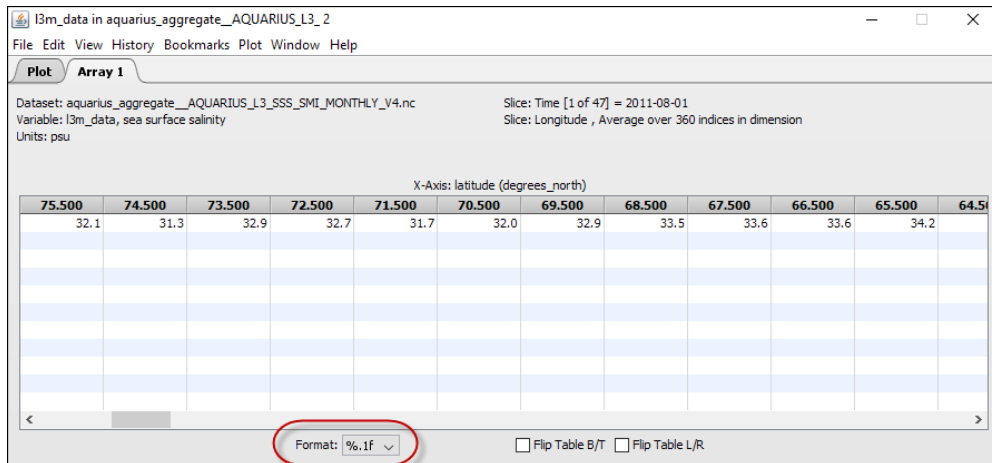




Labels Tab

Use to change displayed **Plot Name** and **Plot Title**.

Click **Background** to select a dark or light background.



Array 1 Tab

Use to view the actual values of the dataset variables.

Use **Format** to select the number of decimal places and how the values are rounded.

